



BELLE PLAINE

NEWS & EVENTS

Summer 2014

How to spell success? K-a-r-e-l-y-n

A Belle Plaine teen-ager is at the top of the world of spelling. **Karelyn Malliet**, 13, took first place in the Wisconsin spelling bee in March to become the state's only entrant in the Scripps National Spelling Bee.

She spent a week in Washington, D.C., in late May with her parents, **Wayne and Sue**, and brother **Ben** taking in the sights including the Washington Monument, Lincoln Memorial and Smithsonian museums.

Karelyn successfully spelled her words in the first two rounds on the spelling bee stage, where 281 youths competed. There was also a computer-based test on spelling and vocabulary and she missed advancing to the semifinals by just one point.

"I'm definitely continuing to spell," Karelyn said. "It was so cool in Washington, D.C., this year. I've talked to kids who were one point away from the semifinals and returned to do fairly good in the next year."

She did well at the district level in fifth grade. "My reading teacher was really enthusiastic about it and she had me watch *Akeelah and the Bee* (a movie about a spelling bee). I got into it a bit more in sixth grade when I made it all the way to state."

Winning the state spelling bee this year was a thrill. "I didn't really know how to react at all, so I sort of just stood there with a shocked look on my face. It was kind of surreal going to compete in the Nationals."

Sue Malliet said Karelyn studied hard. "Karelyn spent at least an hour each day, usually more, sometimes 5-6 hours on a



Karelyn Malliet

weekend day," she said, studying long lists of words. "Sometimes I quizzed her on random words from the dictionary and listed those she misspelled for further study."

"I wasn't really nervous when I was onstage," Karelyn said. "I didn't really care how many people were watching."

Karelyn said she enjoyed sitting on stage to watch the co-champions crowned. "It's really rare for there to be co-champions,

especially now that the words have increased in difficulty to the level of Kierkegaardian and sdrucchiola." (She knew how to spell both.)

Besides the trip to Washington, contestants received a Surface tablet from bee sponsor Microsoft.

Karelyn's career goal is to be a veterinarian. "I kind of want to continue writing and playing both drums and piano as an adult, too, but that might not completely work out," she said.

Parents Wayne Malliet, who is an engineer in construction, and Sue, who does not work outside the home, live on Highway 22 in Belle Plaine.

Belle Plaine has had a previous national spelling bee champion. **Joanne Lagatta** won in 1991.

Inside this issue:

Town update	2
Birds, wildlife	3
Boating rules	4
Annual meeting	5
Fishery strong	6
Sportsman's club	7
Recycle at curb	8

Pontoon parade will go Disney

Mickey Mouse. Donald Duck. Snow White. Disney World. Frozen. Yes, even Pirates of the Caribbean.

There are a hundred ways to decorate a boat with this year's theme, the Wonderful World of Disney. Cash prizes are available to the top three boats and spectators eagerly await the annual Pontoon Parade that begins at 6:30 p.m. Saturday, July 5. The day includes the Kiddie Parade, 10 a.m.,

boat landing; Art Fair, 10 a.m.-4 p.m., Round Lake Park; and Fireworks Association fireworks, dusk.

The second annual **Jim Aumann** Memorial Golf Outing is scheduled for Saturday, Aug. 16, at the Clintonville Riverside Golf Course with events starting at noon.

The annual Cloverleaf Lakes Triathlon will round out the summer on Saturday, Aug. 30. Details will be announced.

Shawano County Fair looking for entries

By Alvin Bartz

It's not too early to start thinking about the Shawano County Fair, scheduled Aug. 27 through Sept. 1.

There are numerous categories that one can enter for judging. We have a Belle Plaine booth for field crops and garden vegetables. Contact **Richard** or **Judy Pahlow** or **Bonnie Olson** for details. Entry forms are usually due around Aug. 1.

There are a lot of local activities going on every summer. The fairgrounds hosts stock car racing every Saturday night, weather permitting, with outstanding racing action. There is also a large flea market at the fairgrounds each Sunday.

Our lakes area will again have an Art Fair and fireworks on Saturday, July 5. The annual Cloverleaf Lakes Triathlon will be held on Labor Day weekend.

Embarrass will have their Fun Daze on Saturday, July 26. The volunteer firefighters there do an outstanding job of family entertainment during the afternoon and evening, following an 11 a.m. parade.

The Pathways bicycling group will be passing through our town Sept. 27 on a tour of barn quilts (see page 6).

Farmers are still struggling with the extreme weather swings.

Belle Plaine chairman's message

Some are still trying to plant wet fields and first-crop hay is being harvested.

Caution on the roads needs to be a priority for farmers and motorists. Especially watch for farm implements as they make left turns.

Work is being done on Belle Plaine Avenue and Riverbank Road this summer. The Rustic Drive project is still scheduled to be completed right after Labor Day.

Have a safe and healthy summer.

Large items collected in August

The Collection and Recycling Center on Cloverleaf Lake Road will accept large items such as furniture without charge on Saturdays, Aug. 2 and 9, and Wednesday, Aug. 6. For a small fee, Harter's will collect large items monthly. Or they can be taken to the Shawano landfill. No construction material will be permitted.

Belle Plaine town notebook

* Reservations are being taken for the town's picnic shelter overlooking Round Lake. The facility can be rented for \$30 for residents or \$40 for non-residents. The Community Center is also available for rental. See the town clerk for details.

* The second half of property taxes for residents who chose to split their payments are due by July 31. They should be sent to the county treasurer at the courthouse in Shawano.

* Regular hours for the Collection and Recycling Center on

Cloverleaf Lake Road are Wednesdays from noon to 4 p.m.; and Saturdays from 8 a.m. to 4 p.m. **Jim and Corey Retzlaff** are the Recycling Center caretakers.

* The Belle Plaine Card Club meets weekly on Thursdays at the Community Center from 9:30 a.m. until noon. All are welcome to join in the fun.

Town clerk **Kristine Vomastic** holds regular office hours from 5 to 7 p.m. Mondays and 8:30 to 11 a.m. Saturdays. Treasurer **Heather Krueger** is available at the Community Center Mondays from 8:30 to 11 a.m. They are also available by appointment.

Belle Plaine officials

Alvin Bartz, chairman

Harold Polzin, supervisor

Dennis Thornton, supervisor

Kristine Vomastic, clerk

Heather Krueger, treasurer

Dennis Hoffmann, constable

Newsletter editor: Dennis Thornton



Belle Plaine Community Center

N3002 St. Hwy. 22

Clintonville, WI 54929

(715) 524-2690

Town clerk's hours:

5 to 7 p.m. Monday; 8:30 to 11 a.m. Saturday or by appointment

Regular Town Board meetings:

Second Monday of each month, 7:30 p.m.

Committees:

Planning, Zoning, Gibson Island Stewardship

Population estimate: 1,855

Cloverleaf Lakes is for the birds, and bird watchers

By Dennis Thornton

Popular advice to stressed-out people is to stop and smell the flowers. On Cloverleaf Lakes, you can add watching our abundance of birds and wildlife.

We've been privileged to have a pair of nesting bald eagles nearby for more than a dozen years and the neighboring **Joostens** report there are two eaglets in the nest this year. Add to that the quietly nesting mama loon on Grass Lake that is sitting on one or more eggs. Herons patrol the shorelines, seeking fish.

Of course we have deer, too many in my opinion, and according to DNR warden **Mark Schrafnagel**, some wandering black bears.

Orioles have been flitting around noisily and a host of goldfinches, blackbirds, cardinals and grosbeaks show up regularly for a meal at our bird feeder. Martins clear the skies of insects.

Our city friends would stare in awe at sights we too often take for granted.

* The Cloverleaf Lakes biggest day of the year, July 5, is coming up fast (see page 1 for the schedule). If you haven't been to the Art Fair in previous years, stop by and look around (and maybe bring your checkbook).

More than a dozen artists and crafters have signed up, with at least 25 expected. **Marv Letven** chairs this event and it has grown every year. More residents are taking advantage of the

CLPA president's message

Round Lake Park picnic shelter, in and around which the Art Fair is held. Pottery, paintings, bowls, crocheted items, baskets and clothing are just some of the items available.

Stop by the CLPA tent to chat and pick up brochures about lake living.

* The CLPA board of directors elected officers at its June 9 meeting. I will continue as president, **Joe Mass** as vice president and **Carol Wegner** as secretary. Appointed to the board to fill a vacancy was **Pam Bruecker**, who was elected treasurer. Pam and her husband, Hugh, have lived on Cloverleaf Lake Road for several years. **Fran West**, who has been treasurer for several years, no longer has time to complete the treasurer's duties but was re-elected unanimously to the board. Also adding their wisdom and volunteer time to the board are **Dick Thurow** and **Dave Rosenfeldt**. Board members set CLPA policy and work with our many volunteers.



Pam Bruecker



Wisconsin's Recreation Center
The Place for Health, Rest & Pleasure
CLPA incorporated in 1936

CLOVERLEAF LAKES
PROTECTIVE ASSOCIATION
P.O. Box 288
Embarrass, WI 54933-0288

www.CloverleafLakes.com

"Preserving our lakes for future generations"

Board of Directors

Dennis Thornton, President

(715) 823-9151

thomgb@frontiernet.net

Joe Mass, vice president

(715) 823-3758

jandsmass@frontiernet.net

Carol Wegner, Secretary

(715) 823-6270

cawegner@frontiernet.net

Pam Brueckner, treasurer

(715) 823-3917

Dave Rosenfeldt

(715) 823-6604

Dick Thurow

(414) 430-9067

Francie West

(715) 823-4059

kfwest@frontiernet.net

Safety comes first for Cloverleaf Lakes boaters

Here are some local and state recreational boating rules for Cloverleaf Lakes.

The channel between Pine Lake and Grass Lake south of Gibson Island has been designed a slow no-wake area and boaters must slow down. The area is marked by white buoys reading "SLOW NO WAKE." All of Round Lake is permanently designed as a slow no-wake area for boaters. The reed area in Grass Lake is also marked off for slow no-wake.

No person shall engage in water skiing, tubing, surfing or use any towing device except from 10 a.m. to 6 p.m. daily.

Boaters are encouraged to circle the lakes in a counter-clockwise rotation.

Children 10 years of age but less than 16 may operate a motorboat if accompanied by a parent or guardian. Persons at least 12 may operate a motorboat alone if they have successfully completed a DNR prescribed boating safety course in Wisconsin or another state. There are no age requirements for operating a boat that is not equipped with a motor.

No one under the age of 12 may operate, lease or rent a personal watercraft. Children at least 12 may operate a personal watercraft if they have completed a safety class. It is unlawful to operate a motorboat within 100 feet of any dock, raft, pier or buoyed restricted area on any lake at a speed in excess of slow no-wake.

Motorboats may not be operated at a speed greater than slow

no-wake on lakes 50 acres or less having public access, except when such lakes serve as thoroughfares between two or more navigable lakes.

It is unlawful to operate a motorboat at a speed that is greater than reasonable and prudent under the existing conditions. The speed shall be so controlled as to avoid colliding with any object, person or conveyance lawfully in or on the water. It is unlawful to create hazardous wakes.

All-green and all-red companion buoys indicate that the boating channel is between them.



Pontoon boats move slowly through the slow no-wake zone on Grass Lake between the reed bed and shore.

Fireworks can pose fire, injury threats

By Joan Sousek

Fireworks are a staple of July Fourth celebrations. They boom, sizzle, zoom, snap and pop, lighting up the night in honor of our independence. They also send thousands of people – many children — to emergency rooms and keep firefighters very busy.

The National Fire Protection Agency (NFPA) says typically more fires are reported on July 4 than any other day of the year in the U.S., and fireworks account for over half of them, more than any other cause.

The NFPA's most recent report shows in 2011 fireworks caused an estimated 17,800 fires including 1,200 structure fires, 400 vehicles fires and over 16,000 other fires – like grass and forest fires.

In Wisconsin, fireworks are available in restricted and non-restricted categories. Non-restricted fireworks include smoke-producing devices, fountains and sparklers. Restricted fireworks are everything else including any that move, jump, explode or emit balls of fire such as bottle rockets, firecrackers, jumping jacks and roman candles.

It is illegal to possess or use restricted fireworks without a

permit from the town chairman, village president or city mayor. The permit allows for the use of the fireworks at a certain time and place.

Many municipalities have fines for use of illegal fireworks, and most fireworks are illegal in state forests and parks (sparklers and snakes are exempted). A citation can cost the lawbreaker up to \$200, and anyone found responsible for starting a forest fire in Wisconsin is liable for the cost of suppressing the fire and for any damages.

The NFPA reports in 2011 emergency rooms saw almost 10,000 people for fireworks-related injuries. Half were burns and 25 percent were contusions and lacerations. The highest risk of injury was among children ages 5-19 and adults 25-44.

The highest numbers of injuries in 2011 were from sparklers (24%) and reloadable shells (20%) followed by small firecrackers, novelties and bottle rockets.

Experts say the safest way to enjoy fireworks is to view a public display created by trained professionals.

Note: Some information in this article was previously published in *For Your Health* magazine.

Cloverleaf Lake Protective Association annual meeting

Date: May 24, 2014

Location: Round Lake Park

Attendees: Board members Dennis Thornton, Joe Mass, Francie West, Carol Wegner, Dick Thurow, Kris Doan, Dave Rosenfeldt; 38 members of the Cloverleaf Lakes Protective Association.

INTRODUCTIONS

Dennis Thornton welcomed the members of CLPA; board members were introduced. Retiring board member Kris Doan was thanked for her work on the board, creating Facebook, dam control, and weeding on Gibson Island. Guests included Supervisor Harold Polzin, County Board member Bonnie Olson, Town Clerk Kris Vomastic and boat landing monitor Brittany Novak.

DNR Warden Mark Schraufnagel was introduced and gave a short review of fawn deaths due to the cold winter. Adults were not as affected with the 2-3 feet of snow but no ice. Few turkeys were affected. Wolves range along rivers, loons are nesting, bears are in the area so take bird feeders in at night. More bear permits will be issued this year, they stay mostly in wet locations, and there are about 20,000 in the state. Bears take more fawns than wolves. No deer feeding in Shawano or Waupaca County; \$330 fine. No wake enforcement to be done by Sheriff.

OFFICIAL BUSINESS

Minutes of the May 25, 2013, meeting were distributed. Roger Hietpas moved, Kris Doan seconded approval of minutes; all in favor, motion carried.

Francie West presented the treasurer's report. Memberships of about 150. DNR grants, town funding, volunteer hours, and \$12,000 CLPA moneys paid the \$82,000 for invasive treatments during 2012-13. Carl Bruggink moved, Esther Letven seconded approval of treasurer's report; all in favor, motion carried.

CLPA Protectors 501c3 donations netted \$10,000 in tax deductible contributions, plus about \$4,000 in memberships.

Re-election of board member Francie West as a board member. Dick Thurow moved, Joe Mass seconded the nomination, all in favor, motion carried. A second vacancy will remain open for appointment of a treasurer.

REPORTS

Dennis Nodolf has a report from Onterra on the Milfoil treatment. Two years ago, Round and Grass had whole lake treatment, last year Pine Lake had whole lake treatment. About 90-95% of the milfoil is gone so no treatment this year except for hand pulling.

Marv Letven indicated the Art Fair will be held at Round Lake Park on Saturday, July 5. There will be food, face painting, balloons for children, 20 booths, food, and plenty of parking. Reminders were given out, applications available on our website.

Carol Wegner introduced the Welcome Committee members Molly Joosten, Kathy Nodolf, Arlene Schabo, Lisa Vukovich, Donna Loesl, Carol Wegner and Bob Tomczyk, chair. New lake residents receive welcome packets and nonmembers are solicited for membership.

ACTIVITIES UPDATE

Joe Mass introduced Brittany Novak as the continuing boat monitor. Boats counted in 2013 were 1,480 with 480 over 100 horsepower motors. Most boaters are from the Clintonville area.

Joe Mass and Dick Thurow continue water quality testing on the three lakes from the time ice goes out. Results are sent to UW-Stevens Point and DNR.

Dick Thurow will continue trapping muskrats, although populations are down. There is no carp contest but spearing is done when they are spawning.

Steve Joosten indicated Fourth of July Kiddie Parade will be held on July 5 and begin at 10 a.m. Treats and ice cream are provided. The Pontoon Parade begins at 6:30 with Disney theme for decorations. Cash prizes are awarded for decorations. Fireworks will begin at dusk.

Golf outing will be Saturday, Aug. 16, at the Clintonville Golf Course. This is the second annual Jim Aumann Memorial with lunch, dinner, prizes on holes, and a raffle. Sign up forms were available.

Triathlon is set for Saturday of Labor Day weekend. A site is yet to be decided.

Al Niebur sampled our fishery last April and again this year with numbers and kinds of fish identified. A full report is available on the CLPA website. There are few carp but they are very large. A new program, Fish Sticks, would put trees near the shore for fish cover and spawning. DNR grant would cover cost and be done in winter on the ice. Could be placed around Gibson Island, Round Lake, and at sunken island.

COMMENTS

Trees were cut on Rustic Drive from the outlet to Sandy Beach to widen the road. Repaving will be done after Labor Day. Trees should be planted 10 feet from the road.

There are two young eagles in the nest this year. The Gibson Island boardwalk will be open June 1.

Marv Letven moved, Steve Joosten second to adjourn the meeting, motion carried; adjourned at 11:20 a.m.

Recorded by Carol Wegner

Check for lake/town news at
www.CloverleafLakes.com and
www.BellePlaineWI.com

Cloverleaf Lakes fishery is good, with a catch

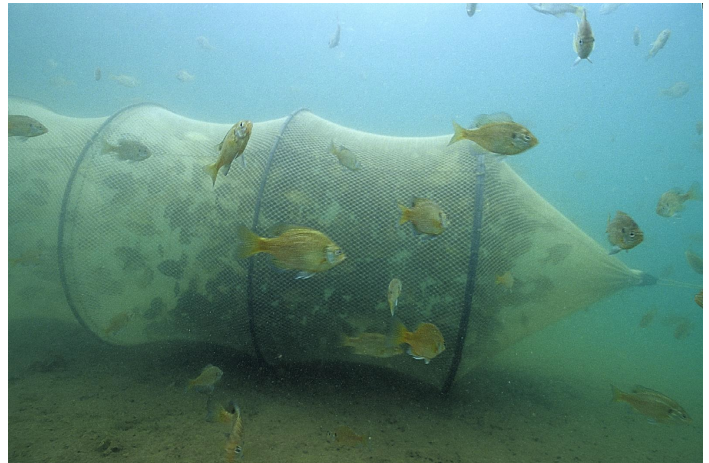
There is an abundance of game fish and panfish in Cloverleaf Lakes, a survey conducted by the Department of Natural Resources found. But there aren't a lot of large bluegills or largemouth bass to be caught.

A team led by **Al Niebur**, senior fisheries biologist, did a fishing survey shortly after ice went out in 2013 and followed up with another survey this spring. They caught many fish by fyke netting and temporarily stunned others with boom shocking. They check the fish for species, abundance and size before releasing them.

Of the hundreds of largemouth bass, just 4 percent were over the 14-inch limit for "keepers" and few of the multiple bluegills were more than 6 inches. "Largemouth bass population is at high levels with fair size structure and slow growth," the report said. Black crappies were also abundant, but most were 9 inches or less, indicating slow growth.

The number of muskies was at "low to moderate level," Niebur said. About 200 muskies were last stocked in the lakes in 2010. The DNR estimates 56 muskies are in the lakes.

Efforts over the years to stock walleyes have not been successful. About 3,000 5-inch to 8-inch walleyes were stocked in 2013. "Walleye are at very low density with no natural reproduction," the report said. "Population will need to be maintained via



Fyke nets capture fish during a DNR survey. The fish are checked for species, abundance and size before being released.

stocking."

Rounding out the fishery are northern pike, bullheads, dogfish, a few perch and sunfish. The carp are few in numbers but large in size, Niebur said.

The complete report is on the Cloverleaf Lakes website at <http://cloverleafakes.com/documents/CloverleafChainSurveyResults2013Version2.pdf>

Pathways plans barn quilt bike ride

The Town of Belle Plaine is one of the most concentrated areas to view barn quilts. Shawano Pathways developed a bicycle route of approximately 25 miles in this area. Participants will be able to view at least 15 barn quilts as they ride this route. Begin on Main Street in Shawano and travel south on highway 22. Cross the highway and travel onto CC. Turn right onto Belle Plaine and then onto Townline Road. At the intersection, turn right onto Cloverleaf Lake Road and continue to County Road Y. At this point, bikers can choose to travel into Embarass for an additional 5 miles or take Y to the right for a short junction with highway 22, before connecting with Belle Plaine Road.

On Saturday, Sept. 27, Shawano Pathways is hosting the second annual "Bike the Barn Quilts" ride. In addition to the Belle Plaine route, there is a "Family Fun" ride of 5-8 miles, a 16-mile guided tour, a 35-mile route and a 70 mile ride. Each ride has at least one food stop and "sag" wagons (trucks to assist with any problems).

Last year 181 participants enjoyed this event. Registration can be done online at ShawanoPathways.org or with brochures that are available throughout the area. The fee for the ride includes a continental breakfast, maps, incentives, food stations, music, and lunch after the ride. Pathways is grateful to the **Brandl** family at the Belle Plaine Cheese factory and the **Georgia** and **Scott LaBrosse** family for hosting food stations on the route in Belle Plaine.



This map marks the Shawano Pathways barn quilt tour route through Belle Plaine.

CLPA Protectors donors

The following are donations and memberships received since the Spring newsletter was printed. Memberships total 161 to date.

Oak (\$100)

Jeff and Gwen Casperson

Ash (\$50)

Greg and Midge Anunson

Mark and Linda Gayhart

Other

Jeff Herold and Cindy Lillge

Dick and Donna Kunz

Sandra Tomashek

Richard Steenbock

Memberships

Greg and Midge Anunson,

Steve and Darlene Boegh,

Kim Carrington, Jeff and

Gwen Casperson, Angie

Clark, Gary and Karen

Coyne, Pat De Guire, William

Dolar and Lisa Vukovich,

Martin Engstrom, Craig Ford,

Connie and Dale Fruendt,

Mark and Linda Gayhart,

Vernon and LaVonne Gross,

Paul and Kim Hendricks, Jeff

Herold and Cindy Lillge,

Mary M. Horn, Gregory and

Karen Husman, Peter and

Mary Jensema, Dennis John-

son, Steve and Molly Joosten,

Norman and Rosemary

Kempf, Vilas Krueger, Dick

and Donna Kunz, Donald and

Julie Lichtenberg, Laverne H.

Molitor, Dennis and Kathy

Nodolf, Audrey Nolan, Eu-

gene and Marilyn Plachinski,

Harold and Sandy Polzin,

Tom and Bev Rosenfeldt,

Peter J. Sesing, Veryle and

Vergie Sievert, Ed and Addie

Stuebe, Sandra Tomashek,

Larry and Cynthia Volz, Jim

and Beth Wearing, Fran West,

Roger and Judie Wilson.

Sportsman's Club forms

The new Belle Plaine Sportsman's Club, officially formed on June 1, plans to focus on wildlife and fish habitat in the area.

The group's mission statement is to "conserve our fish, game and natural resources, to promote safety and to create a lasting legacy with and for our youth to the outdoors through education, preservation and restoration."

Co-chairs **Dan Stueck** and **Craig Ford** are joined on the board by Treasurer **Dick Zoeller**, Secretary **Donna Ford**, **Tom Stueck**, **Mike Fletcher** and **Joe Stueck**.

Monthly meetings are scheduled on the fourth Tuesday of each month at 6 p.m. with the next planned for June 24 at the Break Away.

The first project of the club was to collect 11 bags of trash along Highway Y. The club plans to work with the DNR and the lake association on fish stocking and a "fish sticks" fishery habitat project, as well as assistance with wildlife projects.

More information is available on a website: <https://belleplainesportsman.azurewebsites.net> and by searching Facebook for Belle Plaine Sportsman's Club.

2014 CLPA Annual Membership: Please Join Now

If you haven't paid your dues, please make your check for \$25 payable to Cloverleaf Lakes Protective Association, fill out and clip this form, and send it to CLPA, P.O. Box 288, Embarrass, WI 54933-0288. The membership is for the calendar year 2014.

Name: _____

Lake Address: _____

Telephone: _____

E-Mail: _____

Home Address (if different): _____

Dues \$ 25.00

I would like to make a tax-deductible donation of \$ _____

TOTAL ENCLOSED \$ _____

Circle tax-deductible donation level

Mighty Oak	\$1,000
Maple	\$500
Birch	\$250
Pine	\$100
Ash	\$50
Other	
Business	\$100

Belle Plaine Community Center
N3002 St. Hwy. 22
Clintonville, WI 54929

FIRST CLASS MAIL

Recycling at curbside saves tax money

Belle Plaine town officials are urging residents to use the curbside recycling provided by Harter's Fox Valley Disposal.

Garbage is picked up every Thursday and recyclables are picked up every two weeks. The recyclables that are picked up curbside are handled without charge but the cost of recycling at the dropoff site on Cloverleaf Lake Road is about \$268 a ton.

"The dropoff site was intended for the people where we are not able to provide house-to-house garbage pickup," Town Chairman **Alvin Bartz** said. "If you live on a road where we pick up garbage, we would encourage you to use that service."

The dropoff site will no longer accept large items such as furniture, which can be taken to the Shawano landfill. Also, the dropoff site workers will check to see that only town residents use the site.

Garbage collection is the town's second largest expense after roads, costing more than \$127,000 in 2013. Bartz said the curbside service has reduced the amount of tax money spent on garbage and recyclables, which was \$175,000 to \$200,000 a year when just the dropoff site was used.



Recyclables and garbage set by the curb.

Belle Plaine calendar

- July 5:** Kiddie Parade, 10 a.m., boat landing.
- July 5:** Art Fair, 10 a.m.-4 p.m., Round Lake Park.
- July 5:** Pontoon Parade, 6:30 p.m., around Pine, Grass Lakes
- July 5:** Fireworks Association fireworks, dusk.
- July 14:** CLPA board, 9 a.m., Community Center.
- July 14:** Town Board, 7:30 p.m., Community Center.
- Aug. 11:** CLPA board, 9 a.m., Community Center.
- Aug. 11:** Town Board, 7:30 p.m., Community Center.
- Aug. 16:** Jim Aumann Memorial Golf Outing, noon, Clintonville Riverside Golf Course.